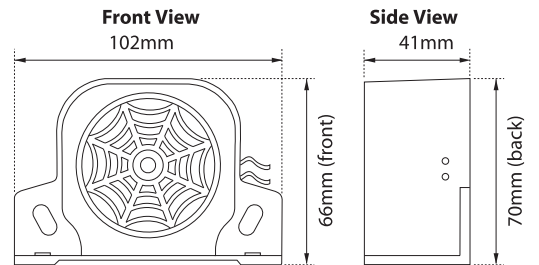
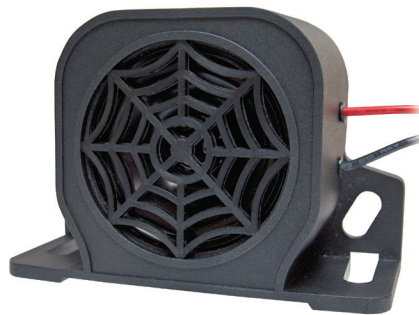
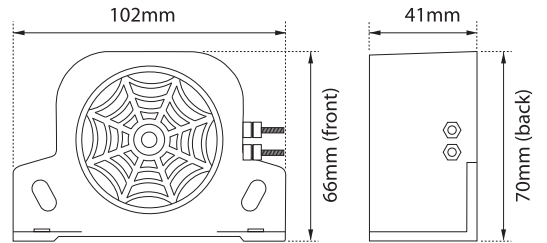


High performance safety reversing alarms that are designed to meet the requirements of a wide range of on and off-road vehicle applications.

## REVERSING ALARMS



### Main Features:

- Multi-Voltage 12-80Vdc
- 2 year warranty
- CE and 'E' marked (EMC)
- Available in 87, 97, 102 and 107 dB sound levels
- Fully weatherproof / pressure washable
- Reverse polarity protected
- Available wire lead or stud connections
- Epoxy encapsulated housing
- -30°C to 77°C extreme temperature reliability.

Part No	Decibels	Voltage	Current Consumption @80Vdc	Mounting	Night Silent	Weight
Wire Lead Connection						
RA087W	87dB	12-80Vdc	0.1A	Universal		302G
RA097W	97dB	12-80Vdc	0.2A	Universal		302G
RA097N	97dB	12-80Vdc	0.2A	Universal	•	302G
RA102W	102dB	12-80Vdc	0.25A	Universal		302G
RA107W	107dB	12-80Vdc	0.4A	Universal		302G
Stud Terminal						
RA087S	87dB	12-80Vdc	0.1A	Universal		318G
RA097S	97dB	12-80Vdc	0.2A	Universal		318G
RA102S	102dB	12-80Vdc	0.25A	Universal		318G
RA107S	107dB	12-80Vdc	0.4A	Universal		318G